

Festoon Systems for I-Beams

Program 0314 | 0320 | 0325 | 0330



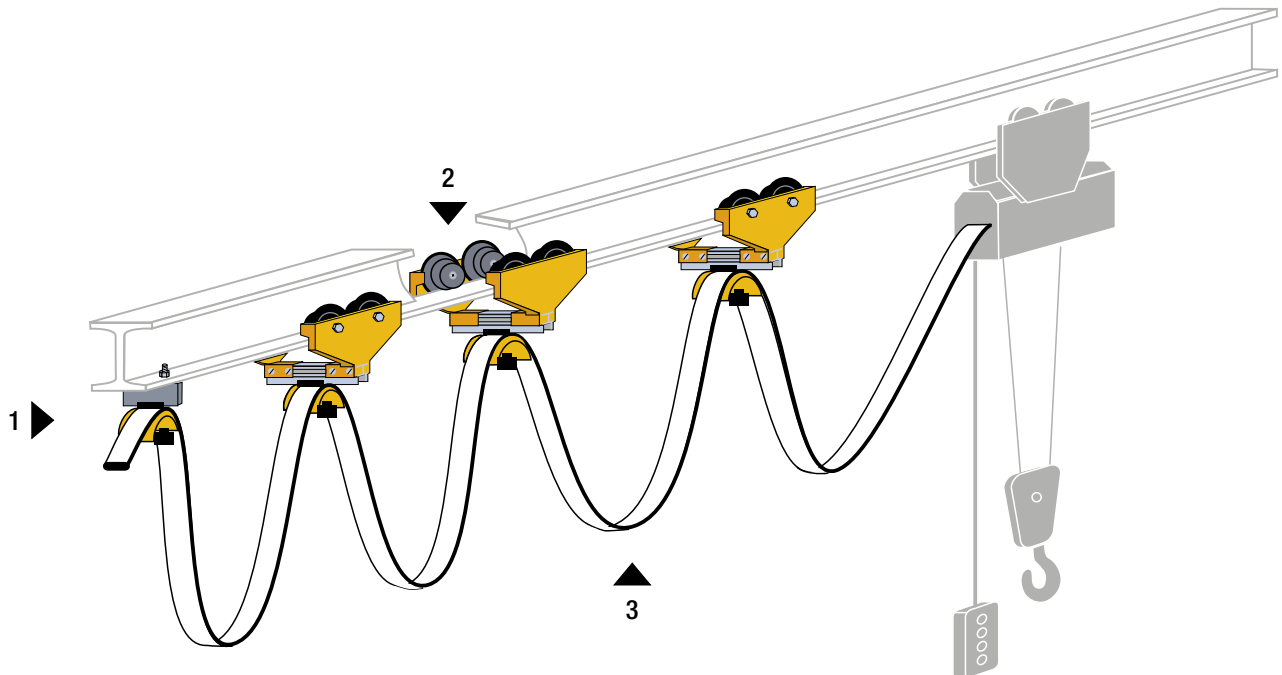
CONDUCTIX
wampfler
DELACHAUX GROUP

Contents

| | |
|--|-----------|
| Cable Trolleys for Flat Cables – Program 0314 | 4 |
| Festoon System for Flat Cables..... | 4 |
| 4 Wheel Plastic Trolley | 4 |
| 3 Wheel Plastic Trolley | 5 |
| 2 Wheel Plastic Trolley | 5 |
| End Clamp | 5 |
| Cable Trolleys for Round Cables – Program 0314 | 6 |
| Festoon System for Round Cables | 6 |
| 4 Wheel Plastic Trolley with Ball Joint Attachment..... | 6 |
| 3 Wheel Plastic Trolley with Ball Joint Attachment..... | 7 |
| 2 Wheel Plastic Trolley with Ball Joint Attachment..... | 7 |
| Cable Clip..... | 8 |
| End Clamp | 8 |
| 2 Wheel Plastic Trolley with Hook Attachment..... | 9 |
| Cable Collar..... | 9 |
| System Arrangement – Program 0320, 0325 and 0330 | 10 |
| Festoon System for Flat and Round Cables | 10 |
| Design Features..... | 10 |
| Ordering Example Program 0320..... | 10 |
| Cable Trolleys – Program 0320 | 11 |
| Steel Trolleys for Flat Cables..... | 11 |
| Steel Trolleys for Round Cables..... | 12 |
| Cable Trolleys – Program 0325 | 13 |
| Steel Trolleys for Flat Cables..... | 13 |
| Steel Trolleys for Round Cables..... | 14 |
| Cable Trolleys – Program 0330 | 15 |
| Steel Trolleys for Flat Cables..... | 15 |
| Steel Trolleys for Round Cables..... | 16 |
| Accessories for Festoon Systems – Program 0320, 0325 and 0330 | 17 |
| Tow Ropes..... | 17 |
| Damping Devices | 17 |
| Round Cable Clamps..... | 18 |
| Spacers..... | 18 |
| Flat Cable Clamps..... | 19 |
| Wear Parts for Cable Trolleys – Program 0320, 0325 and 0330 | 20 |
| Replacement Rollers for Program 0320 | 20 |
| Replacement Rollers for Program 0325 | 20 |
| Replacement Rollers for Program 0330 | 20 |
| Replacement Anti-Lift Roller for Program 0320, 0325 and 0330..... | 21 |
| Damping Ropes for Program 0325 and 0330..... | 21 |

Cable Trolleys for Flat Cables Program 0314

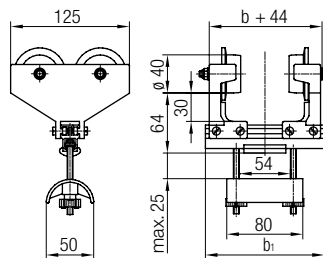
Festoon System for Flat Cables



- 1. End Clamp
- 2. Cable Trolleys
- 3. Flat Cable

| Material Cable Trolleys for Flat Cables | |
|---|-------------------------|
| Side Shield: | Plastic |
| Roller: | Nylon, Friction Bearing |
| Shaft: | Stainless Steel |
| Support Rail: | Aluminum |
| Cable Support: | Plastic |
| Clamping Piece: | Rubber |
| Fasteners: | Galvanized Steel |
| Split Nut: | Plastic |

4 Wheel Plastic Trolley



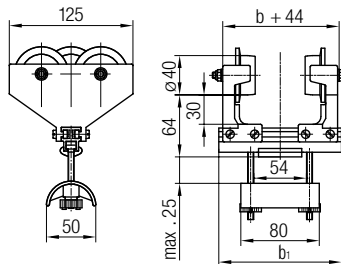
Application

The trolleys 022134 are designed for use with flat cables. They have a maximum cable package window opening of 54 mm width by 25 mm height.

| Part No. | Acid Resistant Part No. | b_1 [mm] | Max. Flange Width b [mm] | Max. Travel Speed [m/min] | Max. Load Capacity [kg] |
|------------|-------------------------|------------|----------------------------|---------------------------|-------------------------|
| 022134-125 | --- | 125 | 81 | 50 | 20 |
| 022134-160 | 022434-160 | 160 | 116 | | |
| 022134-200 | 022434-200 | 200 | 156 | | |
| 022134-250 | --- | 250 | 206 | | |
| 022134-280 | --- | 280 | 236 | | |
| 022134-320 | --- | 320 | 276 | | |
| 022134-350 | --- | 350 | 306 | | |

Cable Trolleys for Flat Cables Program 0314

3 Wheel Plastic Trolley

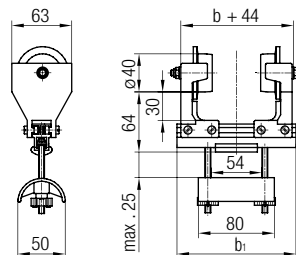


Application

The trolleys 022133 are designed for use with flat cables. They have a maximum cable package window opening of 54 mm width by 25 mm height.

| Part No. | Acid Resistant Part No. | b ₁ [mm] | Max. Flange Width b [mm] | Max. Travel Speed [m/min] | Max. Load Capacity [kg] |
|------------|-------------------------|---------------------|--------------------------|---------------------------|-------------------------|
| 022133-125 | --- | 125 | 81 | 50 | 10 |
| 022133-160 | 022433-160 | 160 | 116 | | |
| 022133-200 | 022433-200 | 200 | 156 | | |
| 022133-250 | --- | 250 | 206 | | |
| 022133-280 | --- | 280 | 236 | | |
| 022133-320 | --- | 320 | 276 | | |

2 Wheel Plastic Trolley

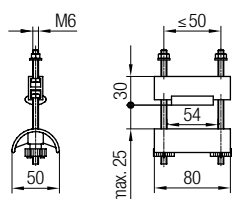


Application

The trolleys 022132 are designed for use with flat cables. They have a maximum cable package window opening of 54 mm width by 25 mm height.

| Part No. | Acid Resistant Part No. | b ₁ [mm] | Max. Flange Width b [mm] | Max. Travel Speed [m/min] | Max. Load Capacity [kg] |
|------------|-------------------------|---------------------|--------------------------|---------------------------|-------------------------|
| 022132-125 | --- | 125 | 81 | 50 | 10 |
| 022132-160 | 022432-160 | 160 | 116 | | |
| 022132-200 | 022432-200 | 200 | 156 | | |
| 022132-250 | --- | 250 | 206 | | |
| 022132-280 | --- | 280 | 236 | | |
| 022132-320 | --- | 320 | 276 | | |

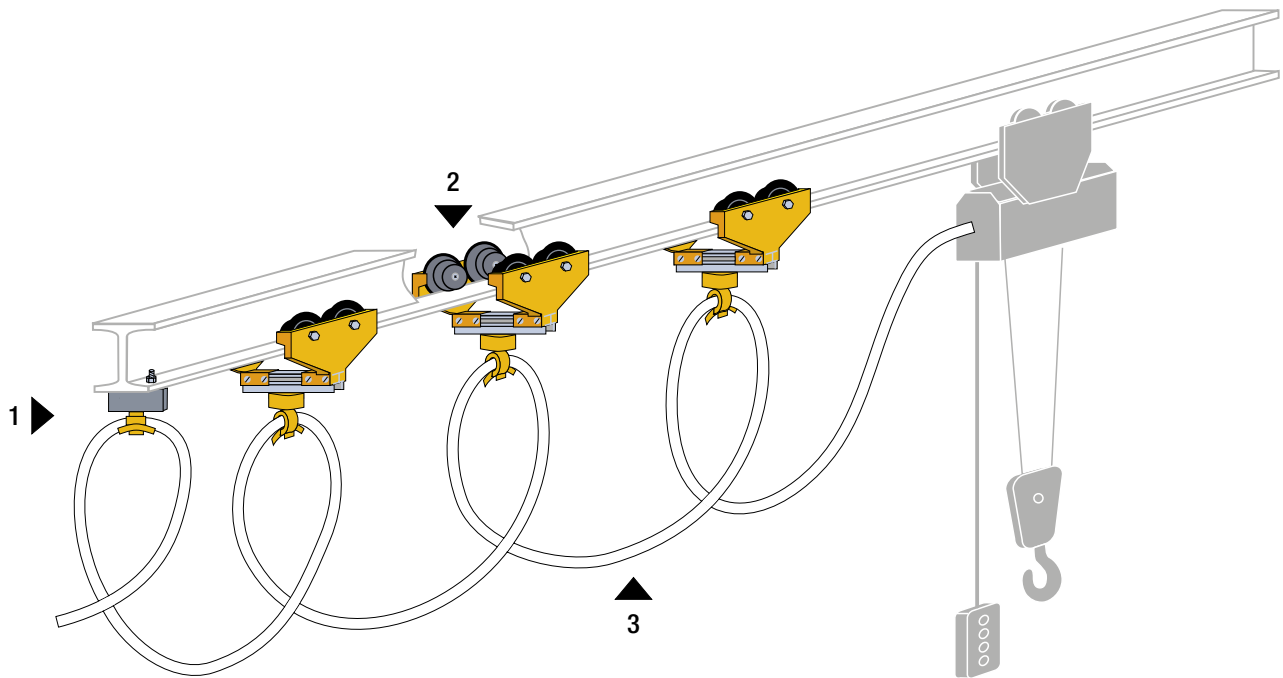
End Clamp



| Part No. | Acid Resistant Part No. |
|------------|-------------------------|
| 020221-080 | 020421 |

Cable Trolleys for Round Cables Program 0314

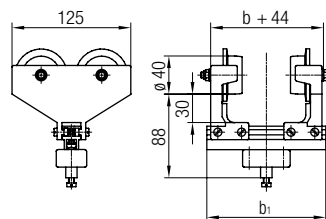
Festoon System for Round Cables



- 1. End Clamp
- 2. Cable Trolleys
- 3. Round Cable

| Material Cable Trolleys for Round Cables | |
|--|-------------------------|
| Side Shield: | Plastic |
| Roller: | Nylon, Friction Bearing |
| Shaft: | Stainless Steel |
| Support Rail: | Aluminum |
| Ball Joint Housing: | Plastic |
| Clamping Piece: | Rubber |
| Fasteners: | Galvanized Steel |

4 Wheel Plastic Trolley with Ball Joint Attachment



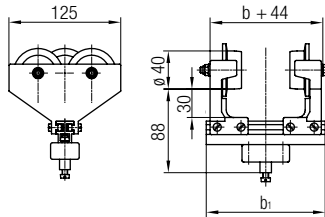
Application

Trolleys with ball joint are designed for use with round cables or hoses. Cable clip type 020131 for supporting cables or hoses must be ordered separately.

| Part No. | Acid Resistant Part No. | b_1 [mm] | Max. Flange Width b [mm] | Max. Travel Speed [m/min] | Max. Load Capacity [kg] |
|------------|-------------------------|------------|----------------------------|---------------------------|-------------------------|
| 022124-125 | --- | 125 | 81 | 50 | 20 |
| 022124-160 | 022424-160 | 160 | 116 | | |
| 022124-200 | 022424-200 | 200 | 156 | | |
| 022124-250 | --- | 250 | 206 | | |

Cable Trolleys for Round Cables Program 0314

3 Wheel Plastic Trolley with Ball Joint Attachment

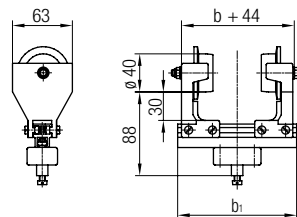


Application

Trolleys with ball joint are designed for use with round cables or hoses. Cable clip type 020131 for supporting cables or hoses must be ordered separately.

| Part No. | Acid Resistant Part No. | b ₁ [mm] | Max. Flange Width b [mm] | Max. Travel Speed [m/min] | Max. Load Capacity [kg] |
|------------|-------------------------|---------------------|--------------------------|---------------------------|-------------------------|
| 022123-125 | --- | 125 | 81 | 50 | 10 |
| 022123-160 | 022423-160 | 160 | 116 | | |
| 022123-200 | 022423-200 | 200 | 156 | | |
| 022123-250 | --- | 250 | 206 | | |

2 Wheel Plastic Trolley with Ball Joint Attachment



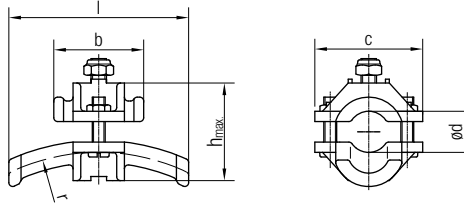
Application

Trolleys with ball joint are designed for use with round cables or hoses. Cable clip type 020131 for supporting cables or hoses must be ordered separately.

| Part No. | Acid Resistant Part No. | b ₁ [mm] | Max. Flange Width b [mm] | Max. Travel Speed [m/min] | Max. Load Capacity [kg] |
|------------|-------------------------|---------------------|--------------------------|---------------------------|-------------------------|
| 022122-125 | --- | 125 | 81 | 50 | 10 |
| 022122-160 | 022422-160 | 160 | 116 | | |
| 022122-200 | 022422-200 | 200 | 156 | | |
| 022122-250 | --- | 250 | 206 | | |

Cable Trolleys for Round Cables Program 0314

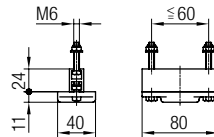
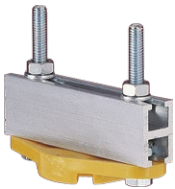
Cable Clip



It is possible to fit multiple cable clips onto a trolley. When fitting different size cable clips, the largest cable clip must be fitted on top.

| Part No. | Acid Resistant Part No. | ød [mm] | r [mm] | l [mm] | h [mm] | b [mm] | c [mm] | Material Cable Clip |
|-----------|-------------------------|---------|--------|--------|--------|--------|--------|---------------------|
| 020131-16 | 020431-16 | 10 - 16 | 80 | 70 | 38 | 35 | 42 | Plastic |
| 020131-25 | 020431-25 | 17 - 25 | 125 | 100 | 47 | 50 | 50 | |
| 020131-36 | 020431-36 | 26 - 36 | 180 | 140 | 58 | 70 | 64 | |

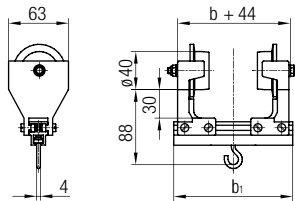
End Clamp



| Part No. | Acid Resistant Part No. |
|------------|-------------------------|
| 020214-080 | 020414-080 |

Cable Trolleys for Round Cables Program 0314

2 Wheel Plastic Trolley with Hook Attachment

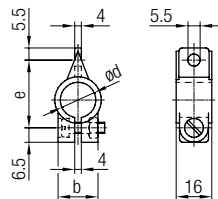


Application

Trolleys with hook are designed for use with cable collars for round cables or hoses. Cable collar type 020111 for cables or hoses must be ordered separately.

| Part No. | b ₁ [mm] | Max. Flange Width b [mm] | Max. Travel Speed [m/min] | Max. Load Capacity [kg] |
|------------|------------------------|-----------------------------|------------------------------|----------------------------|
| 022112-125 | 125 | 81 | 50 | 10 |
| 022112-160 | 160 | 116 | | |
| 022112-200 | 200 | 156 | | |

Cable Collar

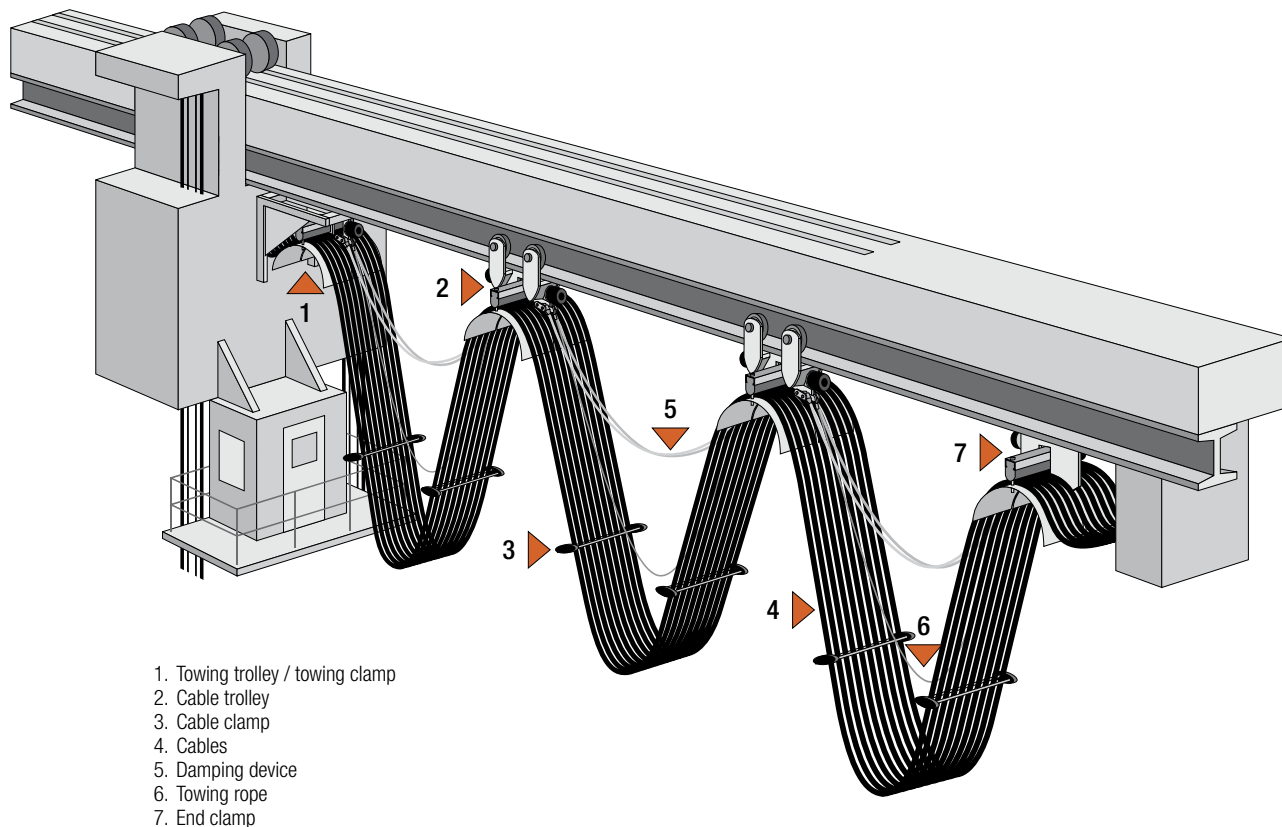


Cable collars for cables or hoses will attach to the hook on the trolley (Part No. 022112). It is possible to fit multiple cable clips onto a trolley. When stacking multiple cable collars, the largest cable collar must be fitted on top.

| Part No. | ød [mm] | b [mm] | e [mm] | Material | |
|-------------|------------|-----------|-----------|--------------|------------------|
| | | | | Cable Collar | Fasteners |
| 020111-08 | 8 | 18 | 23.0 | Plastic | Galvanized Steel |
| 020111-10 | 10 | | 24.5 | | |
| 020111-11 | 11 | | 25.5 | | |
| 020111-12,5 | 12.5 | | 27.5 | | |
| 020111-14 | 14 | | 28.5 | | |
| 020111-16 | 16 | | 30.5 | | |
| 020111-18 | 18 | 32.5 | | | |
| 020111-20 | 20 | 23 | 34.5 | | |
| 020111-22 | 22 | | 36.5 | | |
| 020111-25 | 25 | | 39.5 | | |
| 020111-28 | 28 | | 42.5 | | |
| 020111-32 | 32 | | 46.5 | | |
| 020111-36 | 36 | | 50.5 | | |

System Arrangement

Festoon System for Flat and Round Cables



Design Features

- Base trolley and cable supports: galvanized steel
- Fasteners: galvanized steel
- Running gear spacers are made of aluminum
- Clamping Piece: rubber
- Flange guided rollers made of hardened steel
- Cylindrical main rollers: steel with ball bearings hardened or with polyurethane rollers
- Anti-lift rollers made of hardened steel with ball bearings

Ordering Example Program 0320

Example:

Trolley selection for a flat cable package size of 110 mm width x 45 mm height set for a IPE100 I-Beam with flanged rollers.

Selection:

Cable support diameter $d_a = 125$ mm, according to minimum bend diameter of cable.

$b_2 = 130$ mm

$s = 60$ mm (as per table on page 11)

Part No.:

Cable Trolley without Anti-Lift Rollers

032252-250x160/30-E100

Base Trolley _____
 Running Gear Designation _____
 Beam Suffix _____

Corresponding Tow Trolley with Anti-Lift Rollers

032262-250x160/31-E100

Corresponding End Clamp

032242-250x160

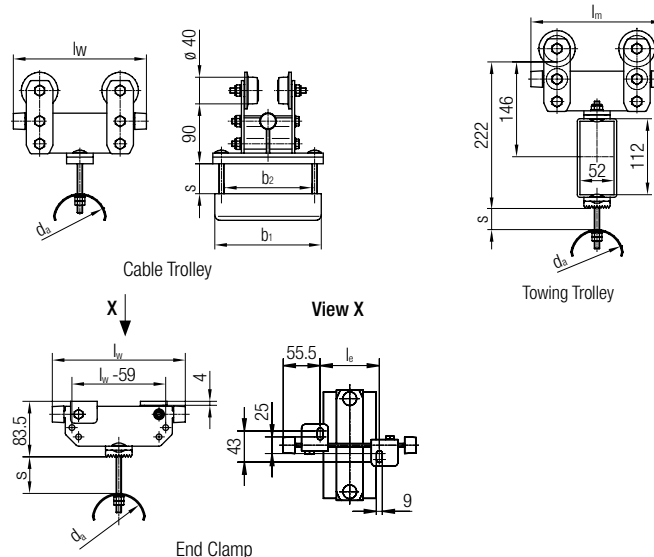
Cable Trolleys Program 0320

Steel Trolleys for Flat Cables



- Max. Load Capacity 80 kg¹⁾
- Max. Travel Speed 100 m/min¹⁾
- Other Trolley Sizes available upon request

1) depending on roller size and roller material



| Cable Trolley Part No. | End Clamp Part No. | Towing Trolley Part No. | da [mm] | lw [mm] | b1 [mm] | b2 [mm] | s [mm] | le [mm] | lm [mm] | | |
|------------------------|--------------------|-------------------------|---------|---------|---------|---------|--------|---------|---------|-----|-----|
| 032250-160x100/... | 032240-160x100 | 032260-200x100/... | 80 | 160 | 100 | 70 | 35 | 49 | 200 | | |
| 032250-160x160/... | 032240-160x160 | 032260-200x160/... | | | 160 | 130 | | | | | |
| 032250-200x100/... | 032240-200x100 | 032260-200x100/... | | | 100 | 70 | 55 | | | 89 | |
| 032250-200x160/... | 032240-200x160 | 032260-200x160/... | | | | | | | | | 160 |
| 032252-200x100/... | 032242-200x100 | 032262-200x100/... | 125 | 200 | 100 | 70 | 35 | 89 | 200 | | |
| 032252-200x160/... | 032242-200x160 | 032262-200x160/... | | | 160 | 130 | | | | | |
| 032252-250x100/... | 032242-250x100 | 032262-250x100/... | | | 100 | 70 | 60 | | | 139 | 250 |
| 032252-250x160/... | 032242-250x160 | 032262-250x160/... | | | | | | | | | |
| 032252-250x200/... | 032242-250x200 | 032262-250x200/... | 160 | 250 | 200 | 170 | 40 | 139 | 250 | | |
| 032253-250x160/... | 032243-250x160 | 032263-250x160/... | | | 175 | 130 | | | | 40 | 139 |
| 032253-250x200/... | 032243-250x200 | 032263-250x200/... | | | | | 215 | | | | |
| 032253-280x160/... | 032243-280x160 | 032263-280x160/... | | | 175 | 130 | 55 | | | 169 | 280 |
| 032253-280x200/... | 032243-280x200 | 032263-280x200/... | 215 | 170 | | | | | | | |

| Running Gear with ø 40/55 mm Flanged Rollers (for parallel and tapered flange I-Beams) | |
|--|--|
| Without Anti-Lift Rollers | |
| Running Gear Designation with Hardened Steel Rollers .../30-... | |
| With Anti-Lift Rollers | |
| Running Gear Designation with Hardened Steel Rollers .../31-... | |

| Running Gear with ø 40 mm Cylindrical Main Rollers (for tapered flange I-Beams only) | |
|--|--|
| Without Anti-Lift Rollers | |
| Running Gear Designation with Hardened Steel Rollers .../10-... with Polyurethane Rollers .../12-... | |
| With Anti-Lift Rollers | |
| Running Gear Designation with Hardened Steel Rollers .../11-... with Polyurethane Rollers .../13-... | |

| Beam Suffix | Beam Size |
|-------------|-----------|
| ...-N080 | INP 080 |
| ...-N100 | INP 100 |
| ...-N120 | INP 120 |
| ...-N140 | INP 140 |
| ...-N160 | INP 160 |
| ...-N180 | INP 180 |
| ...-E080 | IPE 080 |
| ...-E100 | IPE 100 |
| ...-E120 | IPE 120 |
| ...-E140 | IPE 140 |
| ...-E160 | IPE 160 |
| ...-E180 | IPE 180 |
| ...-E200 | IPE 200 |
| --- | --- |

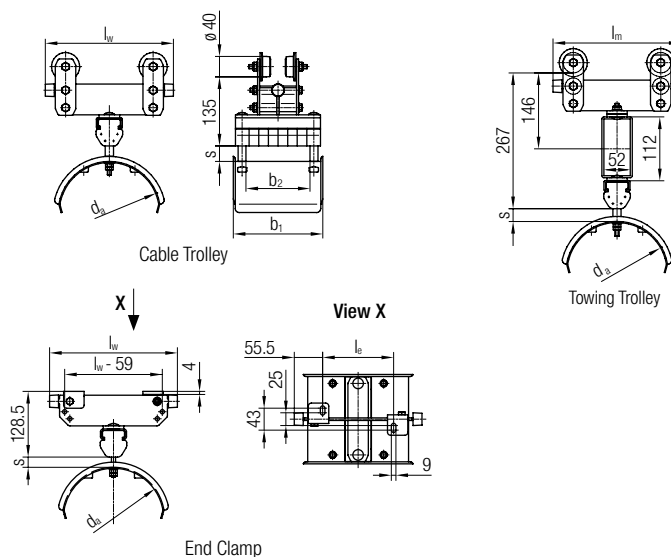
Cable Trolleys Program 0320

Steel Trolleys for Round Cables



- Max. Load Capacity 80 kg¹⁾
- Max. Travel Speed 100 m/min¹⁾
- Other Trolley Sizes available upon request

1) depending on roller size and roller material



| Cable Trolley Part No. | End Clamp Part No. | Towing Trolley Part No. | d _a [mm] | l _w [mm] | b ₁ [mm] | b ₂ [mm] | s [mm] | l _e [mm] | l _m [mm] |
|------------------------|--------------------|-------------------------|---------------------|---------------------|---------------------|---------------------|--------|---------------------|---------------------|
| 032464-250x160/... | 032494-250x160 | 032474-250x160/... | 200 | 250 | 175 | 125 | 20 | 139 | 250 |
| 032464-250x200/... | 032494-250x200 | 032474-250x200/... | | | 215 | 165 | | | |
| 032465-320x160/... | 032495-320x160 | 032475-320x160/... | 250 | 320 | 175 | 125 | 25 | 209 | 320 |
| 032465-320x200/... | 032495-320x200 | 032475-320x200/... | | | 215 | 165 | | | |
| 032465-320x250/... | 032495-320x250 | 032475-320x250/... | | | 265 | 215 | | | |
| 032467-400x160/... | 032497-400x160 | 032477-400x160/... | 320 | 400 | 175 | 125 | 32 | 289 | 400 |
| 032467-400x200/... | 032497-400x200 | 032477-400x200/... | | | 215 | 165 | | | |
| 032467-400x250/... | 032497-400x250 | 032477-400x250/... | | | 265 | 215 | | | |

For tow trolleys, running gears with anti-lift rollers are recommended. Running gears for other beam styles are available on request. Please contact us.

| Running Gear with ø 40/55 mm Flanged Rollers (for parallel and tapered flange I-Beams) | | Running Gear with ø 40 mm Cylindrical Main Rollers (for tapered flange I-Beams only) | | Beam Suffix | Beam Size |
|---|--|---|--|-------------|-----------|
| Without Anti-Lift Rollers | | Without Anti-Lift Rollers | | ...-N080 | INP 080 |
| Running Gear Designation with Hardened Steel Rollers .../30-... | | Running Gear Designation with Hardened Steel Rollers .../10-... with Polyurethane Rollers .../12-... | | ...-N100 | INP 100 |
| | | | | ...-N120 | INP 120 |
| With Anti-Lift Rollers | | With Anti-Lift Rollers | | ...-N140 | INP 140 |
| Running Gear Designation with Hardened Steel Rollers .../31-... | | Running Gear Designation with Hardened Steel Rollers .../11-... with Polyurethane Rollers .../13-... | | ...-N160 | INP 160 |
| | | | | ...-N180 | INP 180 |
| | | | | ...-E080 | IPE 080 |
| | | | | ...-E100 | IPE 100 |
| | | | | ...-E120 | IPE 120 |
| | | | | ...-E140 | IPE 140 |
| | | | | ...-E160 | IPE 160 |
| | | | | ...-E180 | IPE 180 |
| | | | | ...-E200 | IPE 200 |
| | | | | --- | --- |

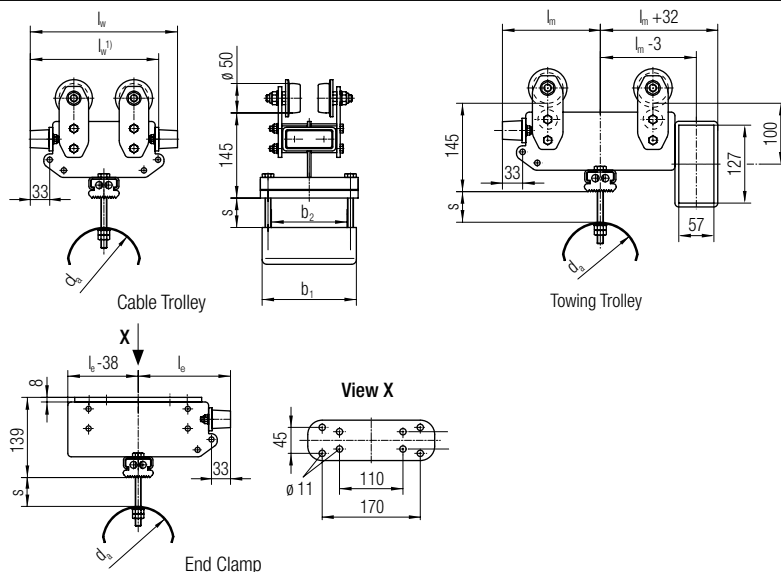
Cable Trolleys Program 0325

Steel Trolleys for Flat Cables



- Max. Load Capacity 125 kg¹⁾
- Max. Travel Speed 120 m/min¹⁾
- Other Trolley Sizes available upon request

1) depending on roller size and roller material



| Cable Trolley Part No. | End Clamp Part No. | Towing Trolley Part No. | d_a [mm] | l_w [mm] | b_1 [mm] | b_2 [mm] | s [mm] | l_e [mm] | l_m [mm] |
|------------------------|--------------------|-------------------------|------------|-------------------|------------|------------|----------|------------|------------|
| 032652-220x160/... | 032642-320x160 | 032662-320x160/... | 125 | 220 ¹⁾ | 160 | 128 | 35 | 160 | 160 |
| 032652-220x200/... | 032642-320x200 | 032662-320x200/... | | 200 | 168 | 50 | | | |
| 032652-250x160/... | 032642-320x160 | 032662-320x160/... | | 250 | 160 | | 128 | | |
| 032652-250x200/... | 032642-320x200 | 032662-320x200/... | | | 200 | 168 | | | |
| 032653-290x160/... | 032643-320x160 | 032663-320x160/... | 160 | 290 ¹⁾ | 175 | 128 | 50 | | |
| 032653-290x200/... | 032643-320x200 | 032663-320x200/... | | | 215 | 168 | | | |
| 032653-290x250/... | 032643-320x250 | 032663-320x250/... | | | 265 | 218 | | | |
| 032653-320x160/... | 032643-320x160 | 032663-320x160/... | | 320 | 175 | 128 | 70 | | |
| 032653-320x200/... | 032643-320x200 | 032663-320x200/... | | | 215 | 168 | | | |
| 032653-320x250/... | 032643-320x250 | 032663-320x250/... | | 265 | 218 | | | | |
| 032654-320x160/... | 032644-320x160 | 032664-320x160/... | 200 | 320 | 175 | 128 | 50 | | |
| 032654-320x200/... | 032644-320x200 | 032664-320x200/... | | | 215 | 168 | | | |
| 032654-320x250/... | 032644-320x250 | 032664-320x250/... | | | 265 | 218 | | | |

1) Trolley with one buffer only

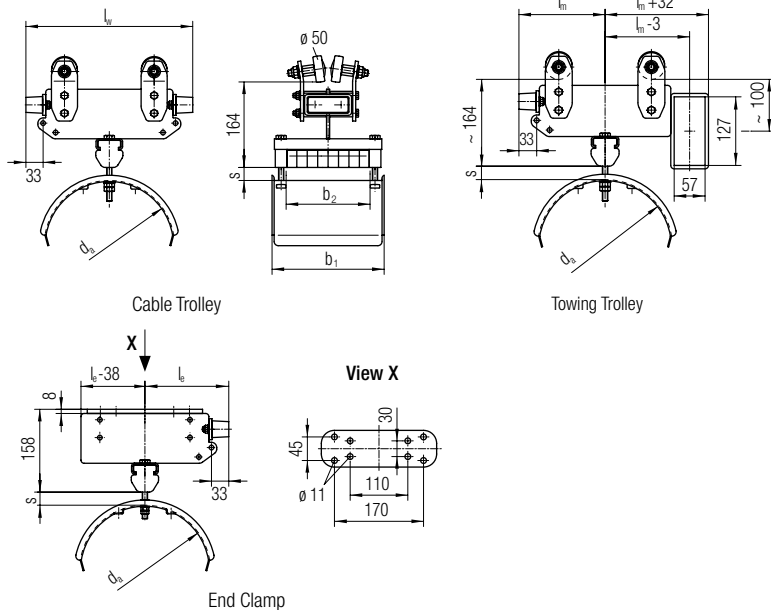
| Running Gear with $\phi 50/63$ mm Flanged Rollers (for parallel and tapered flange I-Beams) | |
|---|--|
| Without Anti-Lift Rollers | |
| Running Gear Designation with Hardened Steel Rollers .../70-... | |
| With Anti-Lift Rollers | |
| Running Gear Designation with Hardened Steel Rollers .../71-... | |

| Running Gear with $\phi 50$ mm Cylindrical Main Rollers (for tapered flange I-Beams only) | |
|--|--|
| Without Anti-Lift Rollers | |
| Running Gear Designation with Hardened Steel Rollers .../50-... with Plastic Rollers .../60-... | |
| With Anti-Lift Rollers | |
| Running Gear Designation with Hardened Steel Rollers .../51-... with Polyurethane Rollers .../61-... | |

| Beam Suffix | Beam Size |
|-------------|-----------|
| ...-N100 | INP 100 |
| ...-N120 | INP 120 |
| ...-N140 | INP 140 |
| ...-N160 | INP 160 |
| ...-N180 | INP 180 |
| ...-E080 | IPE 080 |
| ...-E100 | IPE 100 |
| ...-E120 | IPE 120 |
| ...-E140 | IPE 140 |
| ...-E160 | IPE 160 |
| ...-E180 | IPE 180 |
| ...-E200 | IPE 200 |
| --- | --- |
| --- | --- |

Cable Trolleys Program 0325

Steel Trolleys for Round Cables



- Max. Load Capacity 125 kg¹⁾
- Max. Travel Speed 120 m/min¹⁾
- Other Trolley Sizes available upon request

1) depending on roller size and roller material

| Cable Trolley Part No. | End Clamp Part No. | Towing Trolley Part No. | d _a [mm] | l _w [mm] | b ₁ [mm] | b ₂ [mm] | s [mm] | l _e [mm] | l _m [mm] |
|------------------------|--------------------|-------------------------|---------------------|---------------------|---------------------|---------------------|--------|---------------------|---------------------|
| 032865-320x160/... | 032895-320x160 | 032875-320x160/... | 250 | 320 | 175 | 121 | 25 | 160 | 160 |
| 032865-320x200/... | 032895-320x200 | 032875-320x200/... | | | 215 | 161 | | | |
| 032865-320x250/... | 032895-320x250 | 032875-320x250/... | | | 265 | 211 | | | |
| 032867-400x160/... | 032897-400x160 | 032877-400x160/... | 320 | 400 | 175 | 121 | 32 | 200 | 200 |
| 032867-400x200/... | 032897-400x200 | 032877-400x200/... | | | 215 | 161 | | | |
| 032867-400x250/... | 032897-400x250 | 032877-400x250/... | | | 265 | 211 | | | |

For tow trolleys, running gears with anti-lift rollers are recommended. Running gears for other beam styles are available on request. Please contact us.

| Running Gear with ø50/63 mm Flanged Rollers (for parallel and tapered flange I-Beams) | | Running Gear with ø50 mm Cylindrical Main Rollers (for tapered flange I-Beams only) | | Beam Suffix | Beam Size |
|--|--|---|--|-------------|-----------|
| Without Anti-Lift Rollers | | Without Anti-Lift Rollers | | ...-N100 | INP 100 |
| Running Gear Designation with Hardened Steel Rollers .../70-... | | Running Gear Designation with Hardened Steel Rollers .../50-... with Polyurethane Rollers .../60-... | | ...-N120 | INP 120 |
| | | | | ...-N140 | INP 140 |
| With Anti-Lift Rollers | | With Anti-Lift Rollers | | ...-N160 | INP 160 |
| Running Gear Designation with Hardened Steel Rollers .../71-... | | Running Gear Designation with Hardened Steel Rollers .../51-... with Polyurethane Rollers .../61-... | | ...-N180 | INP 180 |
| | | | | ...-E080 | IPE 080 |
| | | | | ...-E100 | IPE 100 |
| | | | | ...-E120 | IPE 120 |
| | | | | ...-E140 | IPE 140 |
| | | | | ...-E160 | IPE 160 |
| | | | | ...-E180 | IPE 180 |
| | | | | ...-E200 | IPE 200 |
| | | | | --- | --- |
| | | | | --- | --- |

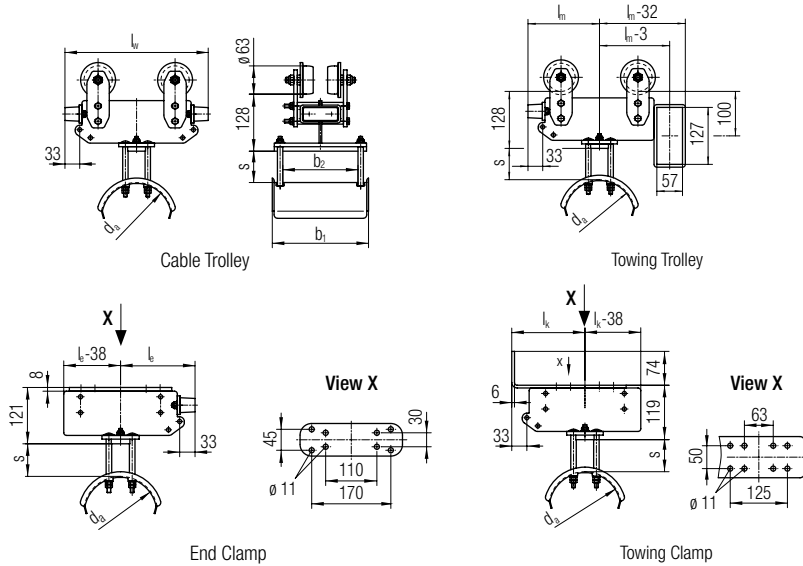
Cable Trolleys Program 0330

Steel Trolley for Flat Cables



- Max. Load Capacity 200 kg¹⁾
- Max. Travel Speed 150 m/min¹⁾
- Other Trolley Sizes available upon request

1) depending on roller size and roller material



| Cable Trolley Part No. | End Clamp Part No. | Towing Trolley Part No. | Towing Clamp Part No. | d _a [mm] | l _w [mm] | b ₁ [mm] | b ₂ [mm] | s [mm] | l _e [mm] | l _m [mm] | l _k [mm] | |
|------------------------|--------------------|-------------------------|-----------------------|---------------------|---------------------|---------------------|---------------------|--------|---------------------|---------------------|---------------------|-----|
| 033252-250x160/... | 033242-320x160 | 033262-320x160/... | 033272-320x160 | 125 | 250 | 175 | 128 | 50 | 160 | 160 | 160 | |
| 033252-250x200/... | 033242-320x200 | 033262-320x200/... | 033272-320x200 | | | 215 | 168 | | | | | |
| 033252-250x250/... | 033242-320x250 | 033262-320x250/... | 033272-320x250 | | | 265 | 218 | | | | | |
| 033252-320x160/... | 033242-320x160 | 033262-320x160/... | 033272-320x160 | | | 320 | 175 | | | | | 128 |
| 033252-320x200/... | 033242-320x200 | 033262-320x200/... | 033272-320x200 | | | | 215 | | | | | 168 |
| 033252-320x250/... | 033242-320x250 | 033262-320x250/... | 033272-320x250 | | | | 265 | | | | | 218 |
| 033253-320x160/... | 033243-320x160 | 033263-320x160/... | 033273-320x160 | 160 | 320 | 175 | 128 | 70 | 160 | 160 | 160 | |
| 033253-320x200/... | 033243-320x200 | 033263-320x200/... | 033273-320x200 | | | 215 | 168 | | | | | |
| 033253-320x250/... | 033243-320x250 | 033263-320x250/... | 033273-320x250 | | | 265 | 218 | | | | | |
| 033254-400x160/... | 033244-400x160 | 033264-400x160/... | 033274-400x160 | 200 | 400 | 175 | 128 | 85 | 200 | 200 | 200 | |
| 033254-400x200/... | 033244-400x200 | 033264-400x200/... | 033274-400x200 | | | 215 | 168 | | | | | |
| 033254-400x250/... | 033244-400x250 | 033264-400x250/... | 033274-400x250 | | | 265 | 218 | | | | | |

| Running Gear with ø63/80 mm Flanged Rollers (for parallel and tapered flange I-Beams) | |
|---|--|
| Without Anti-Lift Rollers | |
| Running Gear Designation with Hardened Steel Rollers .../90-... | |
| With Anti-Lift Rollers | |
| Running Gear Designation with Hardened Steel Rollers .../91-... | |

| Running Gear with ø63 mm Cylindrical Main Rollers (for tapered flange I-Beams only) | |
|--|--|
| Without Anti-Lift Rollers | |
| Running Gear Designation with Hardened Steel Rollers .../80-... with Polyurethane Rollers .../82-... | |
| With Anti-Lift Rollers | |
| Running Gear Designation with Hardened Steel Rollers .../81-... with Polyurethane Rollers .../83-... | |

| Beam Suffix | Beam Size |
|-------------|-----------|
| ...-N120 | INP 120 |
| ...-N140 | INP 140 |
| ...-N160 | INP 160 |
| ...-N180 | INP 180 |
| ...-N200 | INP 200 |
| ...-E100 | IPE 100 |
| ...-E120 | IPE 120 |
| ...-E140 | IPE 140 |
| ...-E160 | IPE 160 |
| ...-E180 | IPE 180 |
| ...-E200 | IPE 200 |
| ...-E220 | IPE 220 |
| --- | --- |
| --- | --- |

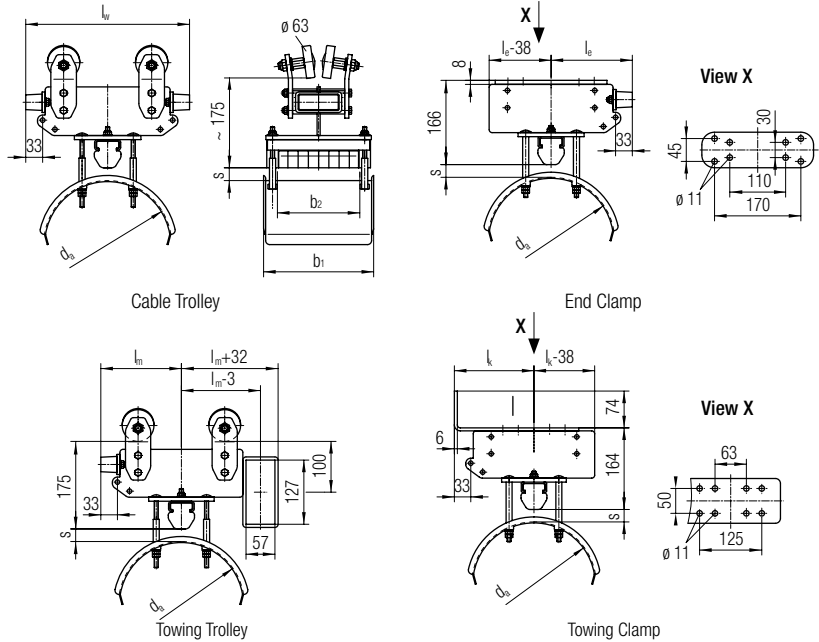
Cable Trolleys Program 0330

Steel Trolley for Round Cables



- Max. Load Capacity 200 kg¹⁾
- Max. Travel Speed 150 m/min¹⁾
- Other Trolley Sizes available upon request

1) depending on roller size and roller material



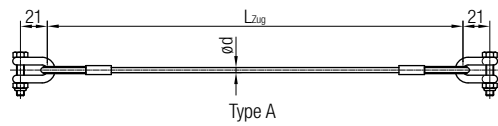
| Cable Trolley Part No. | End Clamp Part No. | Towing Trolley Part No. | Towing Clamp Part No. | d _a [mm] | l _w [mm] | b ₁ [mm] | b ₂ [mm] | s [mm] | l _e [mm] | l _m [mm] | l _k [mm] |
|------------------------|--------------------|-------------------------|-----------------------|---------------------|---------------------|---------------------|---------------------|--------|---------------------|---------------------|---------------------|
| 033465-320x160/... | 033495-320x160 | 033475-320x160/... | 033485-320x160 | 250 | 320 | 175 | 121 | 25 | 160 | 160 | 160 |
| 033465-320x200/... | 033495-320x200 | 033475-320x200/... | 033485-320x200 | | | 215 | 161 | | | | |
| 033465-320x250/... | 033495-320x250 | 033475-320x250/... | 033485-320x250 | | | 265 | 211 | | | | |
| 033467-400x160/... | 033497-400x160 | 033477-400x160/... | 033487-400x160 | 320 | 400 | 175 | 121 | 32 | 200 | 200 | 200 |
| 033467-400x200/... | 033497-400x200 | 033477-400x200/... | 033487-400x200 | | | 215 | 161 | | | | |
| 033467-400x250/... | 033497-400x250 | 033477-400x250/... | 033487-400x250 | | | 265 | 211 | | | | |

For tow trolleys, running gears with anti-lift rollers are recommended. Running gears for other beam styles are available on request. Please contact us.

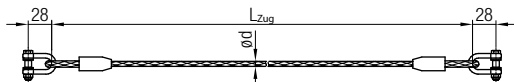
| Running Gear with ø63/80 mm Flanged Rollers (for parallel and tapered flange I-Beams) | | Running Gear with ø63 mm Cylindrical Main Rollers (for tapered flange I-Beams only) | | Beam Suffix | Beam Size |
|---|--|--|--|-------------|-----------|
| Without Anti-Lift Rollers | | Without Anti-Lift Rollers | | ...-N120 | INP 120 |
| Running Gear Designation with Hardened Steel Rollers .../90-... | | Running Gear Designation with Hardened Steel Rollers .../80-... with Polyurethane Rollers .../82-... | | ...-N140 | INP 140 |
| | | | | ...-N160 | INP 160 |
| Running Gear Designation with Hardened Steel Rollers .../91-... | | Running Gear Designation with Hardened Steel Rollers .../81-... with Polyurethane Rollers .../83-... | | ...-N180 | INP 180 |
| | | | | ...-N200 | INP 200 |
| With Anti-Lift Rollers | | With Anti-Lift Rollers | | ...-E100 | IPE 100 |
| | | | | ...-E120 | IPE 120 |
| | | | | ...-E140 | IPE 140 |
| | | | | ...-E160 | IPE 160 |
| | | | | ...-E180 | IPE 180 |
| | | | | ...-E200 | IPE 200 |
| | | | | ...-E220 | IPE 220 |
| | | | | --- | --- |
| | | | | --- | --- |

Accessories for Festoon Systems Program 0320, 0325 and 0330

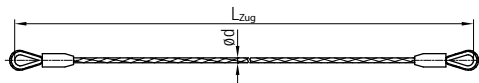
Tow Ropes



Type A



Type B

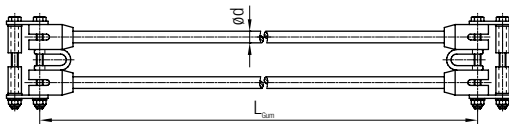


Type C

Type C suggested for use with Damping Rope assembly.
Different types and lengths available upon request.

| Part No. | ød [mm] | Material Rope | Type | Program |
|-----------|---------|---------------------------------|------|------------|
| 020328-04 | 4 | Galvanized Steel | A | 0320 |
| 020329-04 | 4 | Galvanized Steel (w/PVC Jacket) | | |
| 020328-06 | 6 | Galvanized Steel | B | 0325, 0330 |
| 020329-08 | 8 | Galvanized Steel (w/PVC Jacket) | | |
| 020325-08 | 8 | Galvanized Steel (w/PVC Jacket) | | |

Damping Devices



Note:

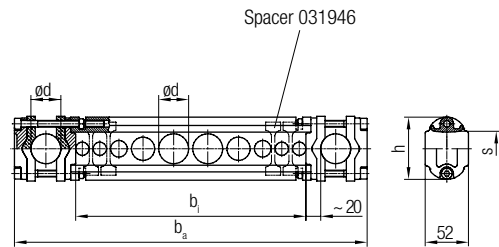
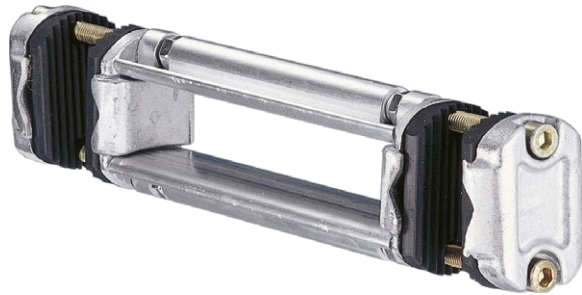
In case of order please state the lengths L_{Gum} of the respective Damping Ropes.

Different types and lengths available upon request.

| Part No. | ød [mm] | Material Rope | Program |
|-----------|---------|---------------------------------|------------|
| 020337-10 | 10 | Rubber core with a Nylon jacket | 0325, 0330 |
| 020337-14 | 14 | | |

Accessories for Festoon Systems Program 0320, 0325 and 0330

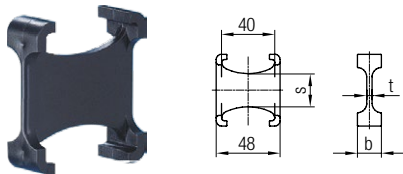
Round Cable Clamps



| Part No. | ϕd_{\max} [mm] | b_1 [mm] | b_a [mm] | h [mm] | s [mm] | $\Sigma d^1)$ [mm] | Support Rail | Material Cable Clip | Fasteners | Weight [kg] | | | |
|--------------------|-------------------------|---------------|---------------|-------------|-------------|-----------------------|--------------|------------------------|--------------------|----------------|--------|--------------------|------|
| 031941-026x100/400 | 26 | 100 | 236 | 64 | 30 | 34 | Aluminum | Rubber | Stainless Steel | 0.95 | | | |
| 031941-026x150/400 | | 150 | 286 | | | | | | | 1.07 | | | |
| 031941-026x200/400 | | 200 | 336 | | | | | | | 1.09 | | | |
| 031941-026x250/400 | | 250 | 386 | | | | | | | 1.31 | | | |
| 031941-036x100/400 | 36 | 100 | 256 | 74 | 40 | 46 | | | | Aluminum | Rubber | Stainless Steel | 1.04 |
| 031941-036x150/400 | | 150 | 306 | | | | | | | | | | 1.16 |
| 031941-036x200/400 | | 200 | 356 | | | | | | | | | | 1.28 |
| 031941-036x250/400 | | 250 | 406 | | | | | | | | | | 1.40 |

1) A cable spacer is required between cables if the sum of the diameters of two adjacent cables is smaller than the value Σd .

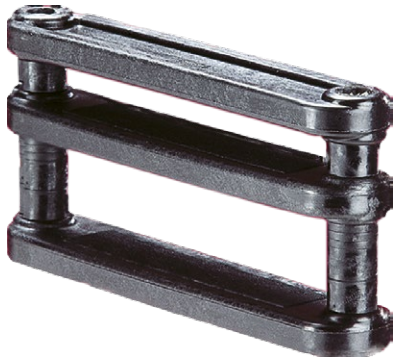
Spacers



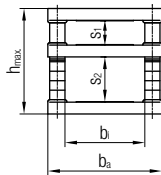
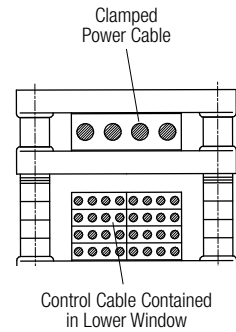
| Part No. | s [mm] | t [mm] | b [mm] | Material | Used with Round Cable Clamp |
|-----------|-------------|-------------|-------------|----------|--------------------------------|
| 031946-26 | 25 | 4 | 18 | Plastic | 031941-026x... |
| 031946-36 | 35 | 5 | 19 | | 031941-036x... |

Accessories for Festoon Systems Program 0320, 0325 and 0330

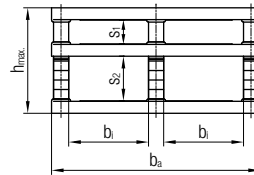
Flat Cable Clamps



Power cables are clamped in upper window s_1 , control cables are contained in lower window s_2 with sufficient space ($> 2\text{ mm}$) to allow the cables to move freely. Flat cable clamps are supplied pre-assembled with upper window s_1 of minimum size and lower window s_2 of maximum size. The cable clamps can be adjusted to fit cable packages by transferring spacers from window s_2 to window s_1 .



020126...
031953...



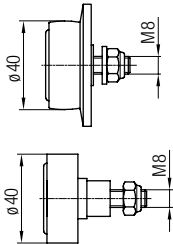
031955...

| Part No. | b_i [mm] | b_a [mm] | $s_1 + s_2$ [mm] | | $s_{1min.}$ [mm] | $h_{max.}$ [mm] | Material | | Weight [kg] | | | | |
|--------------------|---------------|---------------|---------------------|------|---------------------|--------------------|------------------|-----------|----------------|---|----|-----------------|------|
| | | | | | | | Cable Clamps | Fasteners | | | | | |
| 020126-054x018 | 54 | 90 | 18 | +2.5 | 3 | 50 | Galvanized Steel | 0.07 | | | | | |
| 020126-054x028 | | | 28 | | | 60 | | 0.08 | | | | | |
| 020126-054x038 | | | 38 | | | 70 | | 0.09 | | | | | |
| 031953-084x025/400 | 84 | 120 | 25 | +2.5 | 5 | 60 | Plastic | 0.16 | | | | | |
| 031953-084x035/400 | | | 35 | | | 70 | | 0.17 | | | | | |
| 031953-084x045/400 | | | 45 | | | 80 | | 0.18 | | | | | |
| 031953-084x055/400 | | | 55 | | | 90 | | 0.19 | | | | | |
| 031953-084x065/400 | | | 65 | | | 100 | | 0.21 | | | | | |
| 031953-136x025/400 | | | 136 | | | 172 | | 25 | +2.5 | 5 | 60 | Stainless Steel | 0.22 |
| 031953-136x035/400 | | | | | | | | 35 | | | 70 | | 0.23 |
| 031953-136x045/400 | 45 | 80 | | 0.24 | | | | | | | | | |
| 031953-136x055/400 | 55 | 90 | | 0.25 | | | | | | | | | |
| 031953-136x065/400 | 65 | 100 | | 0.26 | | | | | | | | | |
| 031953-136x075/400 | 75 | 110 | | 0.27 | | | | | | | | | |
| 031953-136x085/400 | 85 | 120 | 0.28 | | | | | | | | | | |
| 031955-084x035/400 | 84 | 220 | 35 | +2.5 | 5 | 70 | Stainless Steel | 0.41 | | | | | |
| 031955-084x045/400 | | | 45 | | | 80 | | 0.43 | | | | | |
| 031955-084x055/400 | | | 55 | | | 90 | | 0.44 | | | | | |
| 031955-084x065/400 | | | 65 | | | 100 | | 0.46 | | | | | |
| 031955-084x075/400 | | | 75 | | | 110 | | 0.48 | | | | | |
| 031955-103x025/400 | 103 | 258 | 25 | +2.5 | 5 | 60 | Stainless Steel | 0.42 | | | | | |
| 031955-103x035/400 | | | 35 | | | 70 | | 0.43 | | | | | |
| 031955-103x045/400 | | | 45 | | | 80 | | 0.46 | | | | | |
| 031955-103x055/400 | | | 55 | | | 90 | | 0.47 | | | | | |
| 031955-103x065/400 | | | 65 | | | 100 | | 0.49 | | | | | |
| 031955-103x075/400 | | | 75 | | | 110 | | 0.51 | | | | | |

Wear Parts for Cable Trolleys

Program 0320, 0325 and 0330

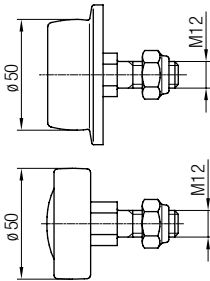
Replacement Rollers for Program 0320



| \varnothing 40/55 mm Flanged Roller | Part No. | Type with |
|---------------------------------------|------------|-----------------------|
| | 030101-040 | Hardened Steel Roller |

| \varnothing 40 mm Cylindrical Main Roller | Part No. | Type with | Beam Size INP |
|---|--------------|-----------------------|---------------|
| | 030102-040.1 | Hardened Steel Roller | 80 - 120 |
| | 030102-040.2 | | 140 - 180 |
| | 030103-040.1 | Polyurethane Roller | 80 - 120 |
| | 030103-040.2 | | 140 - 180 |

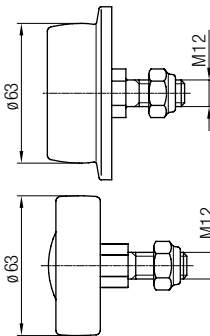
Replacement Rollers for Program 0325



| \varnothing 50/63 mm Flanged Roller | Part No. | Type with |
|---------------------------------------|------------|-----------------------|
| | 030101-050 | Hardened Steel Roller |

| \varnothing 50 mm Cylindrical Main Roller | Part No. | Type with | Beam Size INP |
|---|--------------|-----------------------|---------------|
| | 030102-050.1 | Hardened Steel Roller | 100 |
| | 030102-050.2 | | 120 - 180 |
| | 030113-050.1 | Polyurethane Roller | 100 |
| | 030113-050.3 | | 120 - 180 |

Replacement Rollers for Program 0330



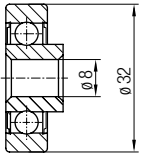
| \varnothing 63/80 mm Flanged Roller | Part No. | Type with |
|---------------------------------------|------------|-----------------------|
| | 030101-063 | Hardened Steel Roller |

| \varnothing 63 mm Cylindrical Main Roller | Part No. | Type with | Beam Size INP |
|---|--------------|-----------------------|---------------|
| | 030102-063.1 | Hardened Steel Roller | 120 - 140 |
| | 030102-063.2 | | 160 - 200 |
| | 030113-063.1 | Polyurethane Roller | 120 - 140 |
| | 030113-063.2 | | 160 - 200 |

Wear Parts for Cable Trolleys

Program 0320, 0325 and 0330

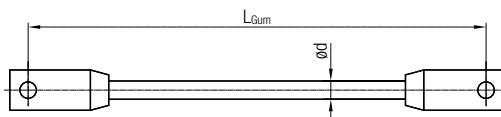
Replacement Anti-Lift Roller for Program 0320, 0325 and 0330



Part No.

02-K012-0062

Damping Ropes for Program 0325 and 0330



Technical details

- Damping Rope: rubber with plastic plait
- Fasteners: stainless steel/hot-dipped galvanized steel

| Part No. | $\varnothing d$ [mm] | Weight [kg/m] |
|-----------|-------------------------|------------------|
| 020336-10 | 10 | 0.09 |
| 020336-14 | 14 | 0.17 |

Note:

In case of order please state the lengths L_{Gum} of the respective damping ropes.

Service – tailor-made

Complete service competence

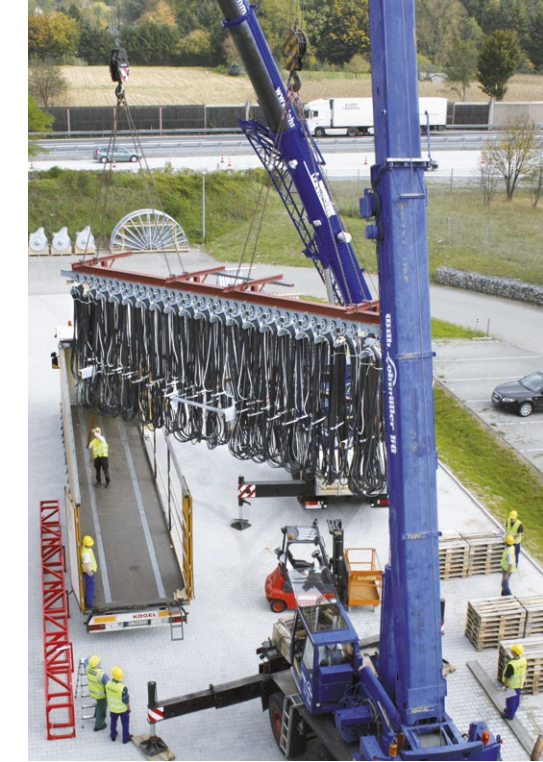
The scope and depth of the Conductix-Wampfler range of services is based on the requests and requirements of the customers. From planning to long-term agreements, anything is possible – according to your needs. Plus, the more complex the system layout and the expectations of operational life and operational safety, the more sense it makes to utilize our competent service team. Ask us!

Project planning

- Determining the application parameters
- Selecting the optimal cable trolley technology and suitable cables – optimized to customer requirements, application parameters and environmental factors

Pre-assembly

- Mounting the cable trolleys on the transport beam
- Laying out and aligning the cables
- Installing the equipment
- Loading and transporting the festoon system to its site of operation



Final assembly & inspection

- Ensuring the correct assembly on site
- Completing the installation, inspection, and commissioning using trained and experienced personnel

Maintenance & service

- Regular maintenance and inspections increase the operational life of the facility, ensuring its long-term availability
- Conductix-Wampfler service agreements: the “complete worry-free package”



The experts of Conductix-Wampfler accompany their customers from planning through pre-assembly right up to the on-site installation – anywhere in the world!



Your Applications – our Solutions

Festoon Systems from Conductix-Wampfler represent only one of the many solutions made possible by the broad spectrum of Conductix-Wampfler components for the transport of energy, data and media supply systems. The solutions we deliver for your applications are of course based on your specific requirements. In many cases, a combination of several different Conductix-Wampfler systems can prove advantageous. You can count on all of Conductix-Wampfler's Business Units for hands-on engineering support – coupled with the perfect solution to meet your energy management and control needs.



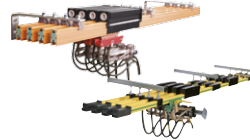
Cable reels

Motorized reels and spring reels by Conductix-Wampfler hold their own wherever energy, data and media have to cover the most diverse distances within a short amount of time – in all directions, fast and safe.



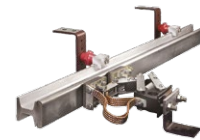
Festoon systems

It's hard to imagine Conductix-Wampfler cable trolleys not being used in virtually every industrial application. They're reliable and robust and available in an enormous variety of dimensions and designs.



Conductor rails

Whether they're enclosed conductor rails or expandable single-pole systems, the proven conductor rails by Conductix-Wampfler reliably move people and material.



Non-insulated conductor rails

Extremely robust, non-insulated conductor rails with copper heads or stainless steel surfaces provide the ideal basis for rough applications, for example in steel mills or shipyards.



Energy guiding chains

The "Jack of all trades" when it comes to transferring energy, data, air and fluid hoses. With their wide range, these energy guiding chains are the ideal solution for many industrial applications.



Slip ring assemblies

Whenever things are really "moving in circles", the proven slip ring assemblies by Conductix-Wampfler ensure the flawless transfer of energy and data. Here, everything revolves around flexibility and reliability!



Inductive Power Transfer IPT®

The no-contact system for transferring energy and data. For all tasks that depend on high speeds and absolute resistance to wear.



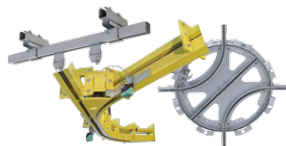
Reels, retractors and balancers

Whether for hoses or cables, as classical reels or high-precision positioning aids for tools, our range of reels and spring balancers take the load off your shoulders.



Jib booms

Complete with tool transporters, reels, or an entire media supply system – here, safety and flexibility are key to the completion of difficult tasks.



Conveyor systems

Whether manual, semiautomatic or with Power & Free – flexibility is achieved with full customization concerning layout and location.

www.conductix.com

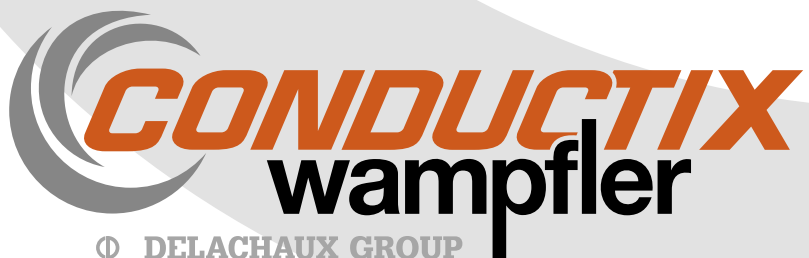
Conductix-Wampfler

has just one critical mission:

To provide you with energy and data transmission systems that will keep your operations up and running 24/7/365.

To contact your nearest sales office, please refer to:

**[www.conductix.com/
contact-search](http://www.conductix.com/contact-search)**



DELACHAUX GROUP